



## Hanging Acoustical Baffles Technical Data



### Product Description:

Sound Designs™ Hanging Acoustical Baffles are designed to address reverberating noises in a space and to enhance speech intelligibility. With a broad selection of sizes, thicknesses and surface materials, these acoustical baffles are custom designed to suit the acoustical and aesthetic needs of any space.

### Form and Function:

Sound Designs Baffles can be installed in any interior where noise within a space is an issue. These baffles, when suspended in a perpendicular orientation to the ceiling can add dramatic visual impact while contributing to the acoustical performance of the space

### Product Profile:

#### ▪ Noise Reduction

Sound Designs™ Acoustical Baffles provide excellent sound absorption when suspended in the vertical orientation.

#### ▪ Unique Design Options

Choose from a variety of shapes and sizes, custom manufactured specifically for your project.

#### ▪ Bonded Surface Treatment

The proprietary process bonds the surface material to our acoustical core for exceptional acoustical performance.

#### ▪ Recycled Content Fiberglass Core

The 6-7 pound per cubic foot density fiberglass core is manufactured with a weighted average of over 40% post-consumer recycled glass as a percentage of glass weight as certified by Scientific Certification Systems (SCS).

#### ▪ Design Flexibility

Choose from a variety of shapes and sizes custom-manufactured specifically for your project. Core thicknesses of 1" and 2" are available in widths up to 60" and maximum lengths up to 120". Panel widths over 48" require 60"- 66" wide surface materials. Additional custom thicknesses are available.

### Acoustical Performance

Our acoustical products have been tested at a NVLAP (National Voluntary Laboratory Accreditation Program) accredited laboratory and have achieved acoustical performance ratings when tested in accordance with ASTM C 423-08a.

Panel Thickness	Sabins
1"	8.0 Based on 24" X 48" Baffle
2"	12.0 Based on 24" X 48" Baffle

### Edges

Edges are resin hardened providing dimensional stability to the panel perimeter. Edge details are available in square, half bevel, quarter bevel and radius.

### Fire Rating

All components are Class 1/A fire rated when tested in accordance with ASTM E84.

The flammability testing data, conclusions and recommendations in these reports relate solely to measurements and descriptions of the properties of materials, products, or systems in response to heat and flame under controlled laboratory conditions and should not be considered or used for the description, appraisal or regulations of the fire hazard of materials, products or systems under actual fire conditions.

### Surface Options

Choose from a wide variety of fabrics and commercial wallcoverings to enhance your interior space. Each surface material is carefully tested and examined to assure that your design aesthetic is met.

#### ▪ KOROSEAL's High Performance Textiles

Beautiful dobby and jacquard weaves are available in Polyester/ Polyolefin fabric blends. Versatile colorways coordinate with today's interior palettes. All fabrics are treated with a stain resistant finish for ease of



## Hanging Acoustical Baffles Technical Data

maintenance. The fabric backing is acoustically engineered to enhance sound absorption.

- **KOROSEAL®**, **Vicrtex®**, **Sanitas®** and **KOROSEAL® Studios Wallcoverings**

Choose from hundreds of textures and patterns offered in these beautiful collections. Our commercial wallcoverings are acoustically perforated to enhance our dimensional acoustical baffles sound absorption characteristics.

- **Digitally Printed Fabrics and Commercial Wallcoverings**

Our experienced, in-house design staff can bring your graphic elements to life using our exclusive digitally printed wallcoverings as the canvas.

In addition, wide format FR polyester fabrics can be dye sublimation printed for use on our acoustical ceiling clouds for grand scale, high resolution statements.

- **Customer's Own Fabric**

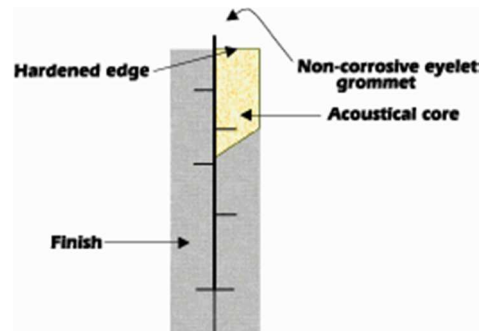
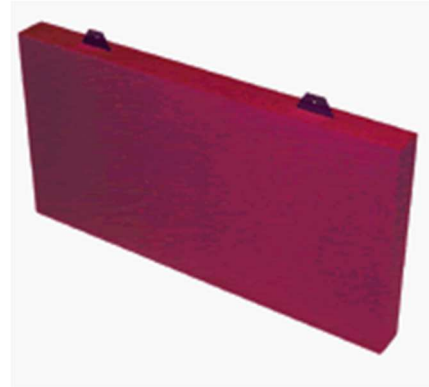
Sound Designs Acoustical Ceiling Baffles are offered in custom sizes, thicknesses and finishes. When you need to coordinate other fabrics and finishes with needed acoustical treatments, Koroseal will test your fabric and confirm that it is compatible with our manufacturing process.

- **Acoustically Transparent Textured and Painted Surface**

Sound Designs Clouds can be manufactured to blend into their environment and match their painted surroundings. These products are coated with an acoustically transparent textured finish that translates as a smooth, traditional look of painted drywall or plaster. These clouds are designed to offer an architectural element while providing exceptional acoustical absorption.

### Installation

Sound Designs™ Hanging Acoustical Baffles incorporate non-corrosive metal eyelets imbedded in the baffle core to provide easy attachment to a suspension cable or chain.



### Warranty

One (1) year limited warranty. Contact your local KOROSEAL Interior Products Representative for complete Warranty details.

Sound Designs™, KOROSEAL®, Vicrtex®, Sanitas® and KOROSEAL® Studios Wallcoverings are registered trademarks of Koroseal Interior Products, LLC. NAVLAP® is a registered trademark of the National Voluntary Accreditation Program

©2014 Koroseal Interior Products, LLC. Koroseal Interior Products, LLC reserves the right to make design changes or to withdraw any design without notice