



Dimensions

- **Lengths:** Planks are supplied in standard 96" and 120" nominal lengths. Custom lengths are available. Random lengths of 84" and longer are considered good unless specific custom lengths are ordered.
- **Widths:** Standard planks are 7-1/4" wide across the face. Custom widths are available.
- **Thickness:** Standard planks are 3/4" Nominal Thickness.

Composition

- **Decorative:** Planks can be ordered with Real Wood Veneer or High Pressure Laminate faces.
- **Substrate:** 3/4" Acoustical MDF cores are calibrated to 18mm thickness.
- **Backer:** Back open faces are balanced with black impregnated sound absorptive backer
- **Perforation:** Micro-perforation

Thickness Tolerance	+/- 0.5mm
Perforation Registration	+/- 5.0mm
Groove Width Between Planks	2.5mm (+/- 0.5mm)
Plank Width Tolerance	+/-2.5mm
Formaldehyde Release	Class E1
Moisture Content	8-12%
Wall Flatness Requirement (over 10' length)	1/4"
Average Density	540kg/m3 (+/-10%) (19mm)

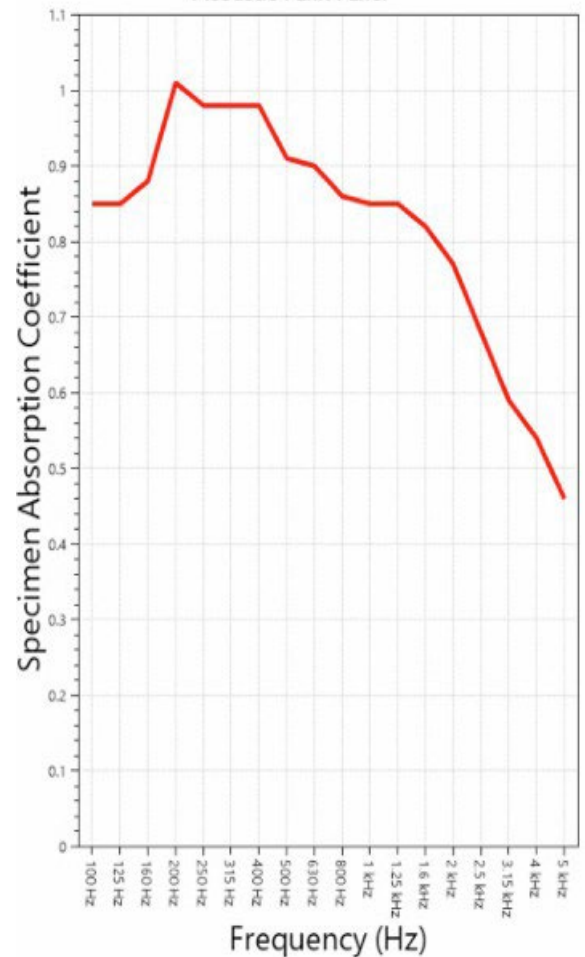
Acoustical Performance

- Acoustical Planks achieve an acoustical rating of **NRC 0.90**, **SAA 0.88**
- Test Report: A24-285
- Acoustic planks tested in accordance with ASTM C423 and E795, ISO 354
- Test Results:

1/3 Octave Center Frequency (Hz)	Total Absorption (m ²)	Total Absorption (Sabins)	Absorption Coefficient
100	5.73	61.63	0.85
** 125	5.70	61.32	0.85
160	5.91	63.61	0.88
200	6.82	73.38	1.01
** 250	6.58	70.82	0.98
315	6.57	70.68	0.98
400	6.59	70.99	0.98
** 500	6.14	66.07	0.91
630	6.07	65.35	0.90
800	5.79	62.31	0.86
** 1000	5.69	61.26	0.85
1250	5.71	61.46	0.85
1600	5.52	59.42	0.82
** 2000	5.16	55.54	0.77
2500	4.60	49.52	0.68
3150	3.98	42.83	0.59
** 4000	3.60	38.73	0.54
5000	3.08	33.20	0.46

SAA = 0.88
NRC = 0.90

SOUND ABSORPTION REPORT Acoustic Plank Panel



SAA = 0.88
NRC = 0.90

Fire Rating

Acoustic Planks are supplied as either standard Rated or Class 'A' Fire Rated ASTM-E84 and 102

Test Report: TUL0918-1A

Acoustic Planks are tested in accordance with ASTM-E84 and CAN-ULC 102

Test Results: Class A Fire Rated

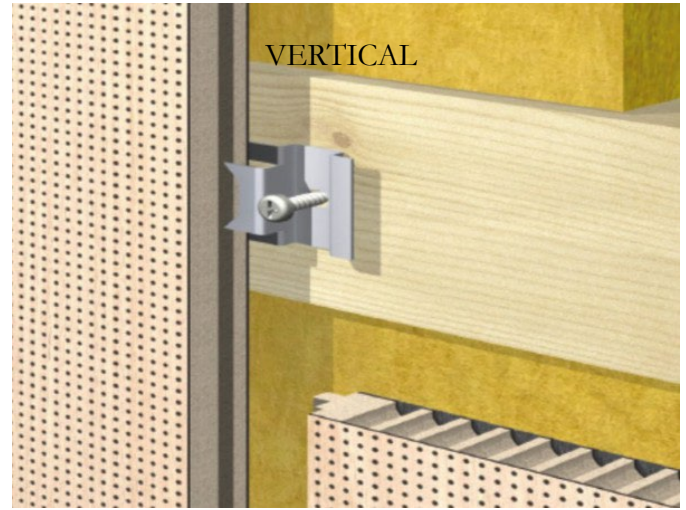
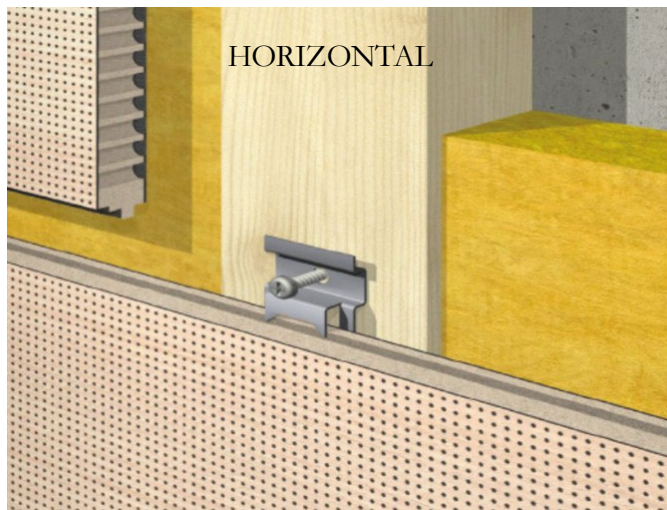


Flame Spread: 15
Smoke Developed: 70

Installation Guidelines

Acoustical Planks can be installed in any direction. Most common is horizontal and vertical. Care must be taken to install the planks using the clips provided. Planks can be attached directly to stud or drywall. Ensure that fasteners attach to blocking.

When planks are installed in the vertical plain, they must sit either on top of a base board or on the available L-Angle Trim Piece. Where the ends of the planks are visible (they do not abut a wall), use the available L-Angle Trim Piece to conceal the edge.



(WALL- RECOMMENDED 4-6 CLIPS PER 110" PLANKS)
(CEILING - RECOMMENDED 6-9 CLIPS PER 110" PLANKS)

Cleaning Guidelines

Remove dust from surfaces and penetrations by vacuuming using only a soft brush. Do not scratch wood surfaces with sharp metal or plastic vacuum cleaner extensions. Remove pencil marks with soft erasure. Remove general surface dirt with a clean, soft cloth dampened with a diluted, mild, cleaning agent and warm water. Wipe again with clean, soft cloth dampened only with warm water. Finally, dry surface completely with clean, dry cloth. Do not use abrasive cleaners with grit or cloths that could scratch the wood finish.

Acclimatization & Storage

Acoustic planks must be cared for in a controlled interior environment (RH 25%-55% max; temp. 60-80 degrees) and installed only after reaching equilibrium moisture content. Planks should be stored on a flat dry surface, off the ground.