

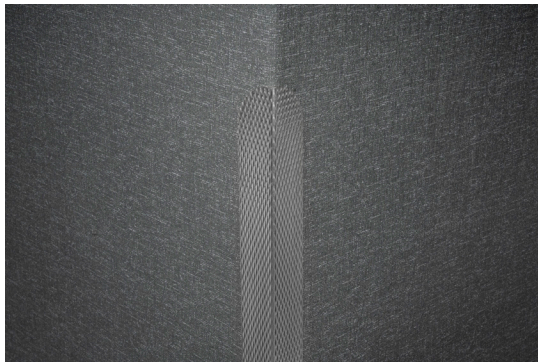
TEXTURED STAINLESS STEEL CORNER GUARDS



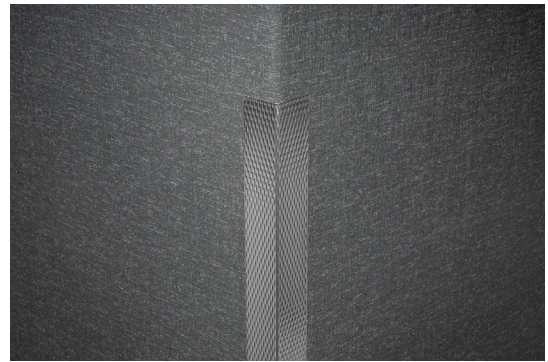
Korogard Textured Stainless Steel Corner Guards provide a modern and attractive choice for corner protection. Easily installed, these guards are made of 20-gauge stainless steel with a #4 satin finish and can be specified with your choice of five textures. Ideal for medium- to high-impact areas, Textured Stainless Steel Corner Guards are available as surface or recessed mount. Surface-mount corner guards have a standard 90° angle and can be specified with a square or arc crown and in 4' (1.2m) or 8' (2.4m) lengths and in 1-1/2" (38.1mm) or 3-1/2" (88.9mm) wing sizes. Recessed-mount corner guards have a standard 90° angle and measure 8' (2.4m) in length with a 3-1/2" (88.9mm) wing size. Corner guards with 135° angle are also available.

Korogard Textured Stainless Steel Corner Guards are backed by a limited five-year warranty. All corner guards are Class A fire rated and meet national building code standards. All Korogard protective products color-coordinate with a multitude of Koroseal Wallcoverings for a systems approach to wall protection.

For more information on Korogard Corner Guards or the Koroseal Wall Protection System, please call your local Korogard distributor.



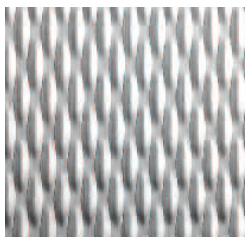
ARC



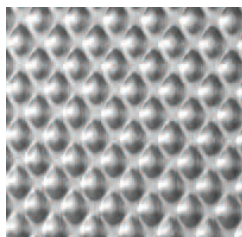
SQUARE



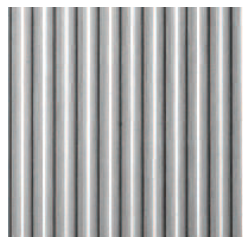
RECESSED



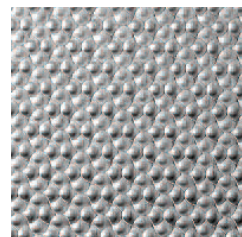
S1



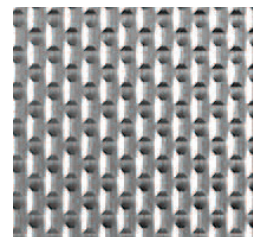
S2



S3



S4



S5

SECTION 10 26 00 CORNER GUARDS

PART 1 GENERAL

1.01 SECTION INCLUDES

Textured Stainless Steel Corner Guards.

1.02 SUBMITTALS

- A. Submit in accordance with Section 01 33 00—Submittals.
- B. Product Data: Submit manufacturer's product data.
- C. Samples: Submit for approval 12" (304.8mm) long sample of each color specified.
- D. Test Reports: Submit manufacturer's test reports and certification indicating compliance with applicable building code requirements.

1.03 QUALITY ASSURANCE

Comply with specified project requirements regarding fit and finish.

1.04 DELIVERY, STORAGE, AND HANDLING

- A. Delivery: Deliver materials to site in manufacturer's original, unopened containers and packaging with labels clearly identifying product name and manufacturer.
- B. Storage: Store materials in a clean, dry area protected against damage of any kind.

PART 2 PRODUCTS

2.01 MANUFACTURER

Korogard Wall Protection Systems,
A Division of Koroseal Interior Products, LLC

2.02 CORNER GUARDS

Koroseal Korogard Series VS14, VA14, VS18, VA18, VS34, VA34, VS38, VA38, and RS38 20-gauge Textured Stainless Steel Corner Guard adhered to substrate corner. Exposed surfaces shall be free of discoloration or other imperfections.

1. Dimensions:

- a. Leg length: 1-1/2" (38.1mm) - VS14, VA14, VS18, and VA18 and 3-1/2" (88.9mm) - VS34, VA34, VS38, VA38, and RS38.
- b. Angle: 90°.

2. Material: Stainless Steel, type 304.

3. Finish: #4 Satin.

PART 3 EXECUTION

3.01 EXAMINATION

Verify by examination that wall surfaces are acceptable to receive the specified guard systems. Notify the Architect in writing if wall surfaces are not acceptable. Do not begin installation until unacceptable conditions have been corrected.

3.02 INSTALLATION

- A. Install corner guards to wall securely using mastic construction adhesive or appropriate screws, as specified.
- B. Install corner guards accurately in location, alignment, and elevation.