



# DRY ERASE & TACKABLE PRODUCTS

BRAINSTORM. COLLABORATE. CREATE.

# WALLTALKERS® put the writing on the wall.

Koroseal's Walltalkers products allow people the freedom to brainstorm, collaborate, design, and create within their workspace, while maintaining the aesthetic vision of your design.

Walltalkers dry-erase and tackable surfaces allow you to easily communicate your design concepts, while supporting everyday creativity and function. Invented more than 30 years ago, Koroseal is continuing to create modern solutions for collaborative spaces including new innovative options like magnetic, writable, and projectable surfaces - all virtually seamless. Our products cover wall-to-wall and floor-to-ceiling.

Take your collaborative workspaces to the next level - explore our writable, magnetic, projectable, and tackable surfaces.

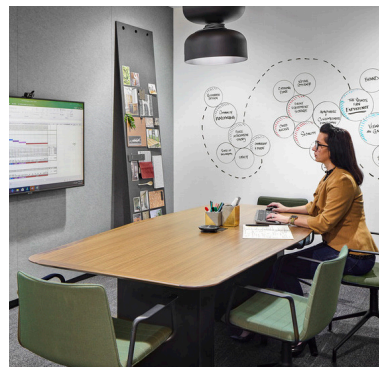
[explore our products >](#)



# COLLABORATE ♦ STRATEGIZE ♦ CREATE

Our unique Walltalkers products give teams the power to actively write, draw, create, and engage in their workspace. Collaboration is key. Co-workers can brainstorm new innovative products, students can write as they practice new skills together, and teams can encourage interactive collaboration.

With Walltalkers, **we provide wall-to-wall and floor-to-ceiling spaces** to unleash your creativity!



## Corporate

Need a team brainstorming session? Working through a new process? Walltalkers are easy to use and allow endless possibilities for sketching, listing, and collaborating.



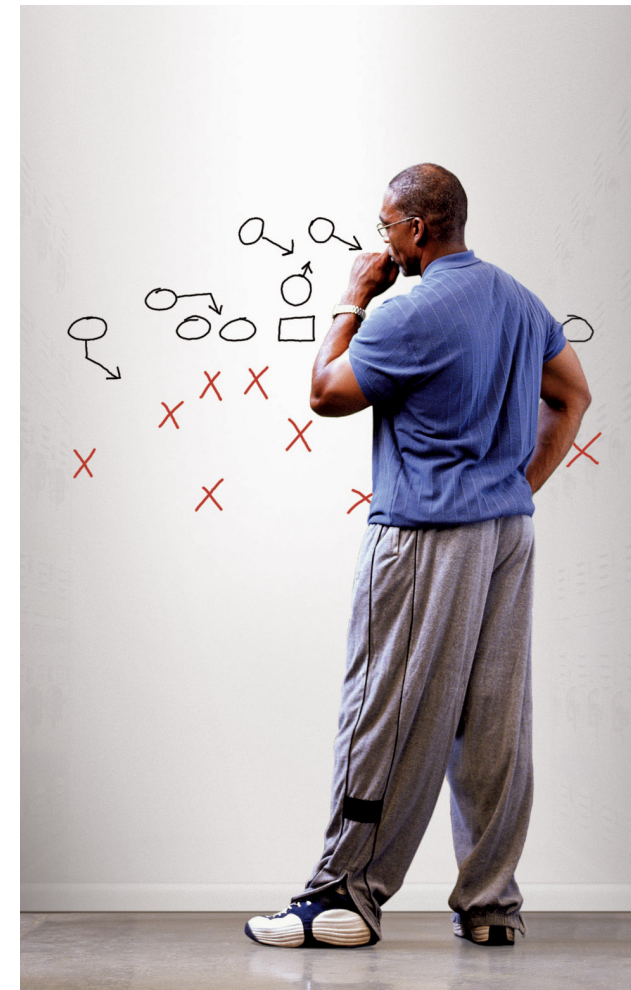
## Education

Traditional whiteboards stain, crack, and warp. Take your lesson up a notch with Walltalkers. Not only will your wall outlive lecture after lecture, but it will also allow you to project notes and easily hang up student work.



## Healthcare

Walltalkers provide a superior dry-erase solution to enhance communication, organization, and patient care. Create a centralized platform to relay information such as patient names, room numbers, and care plans.



Athletic Facilities



Restaurants



Businesses

# SMOOTH, SEAMLESS SOLUTIONS

When it comes to achieving a smooth and clean finish, Walltalkers outshines traditional dry-erase paint options. Unlike paint, which often leaves a textured feel on the surface, **Walltalkers provides a level of smoothness that enhances both aesthetics and performance.** Walltalkers products also offer exceptional installation flexibility. Products can be seamlessly installed from wall-to-wall, allowing for a continuous and uninterrupted writing surface; or from floor-to-ceiling, maximizing the usable space for collaboration and creativity.

The ability of Walltalkers **to conform to curved surfaces adds another dimension of design possibilities**, enabling it to transform unconventional spaces into functional and visually appealing areas for expression. Walltalkers can enhance any interior environment, with the choice of design entirely yours.

If you aren't sure of the best way to install a Walltalkers product in your space, collaborate with your local sales representative to find the perfect solution.



Wall-to-Wall



Framed



Around a corner or along curved surfaces

# LET'S TALK ABOUT FEATURES YOU'LL LOVE



## High-Quality

Meticulously crafted with the highest-quality materials, our dry-erase products undergo a diligent lamination process to **ensure 100% uniform coverage** of the vinyl substrate.



## Easy Maintenance

With a simple wipe using a damp cloth or sponge, these **surfaces effortlessly regain their original cleanliness**, maintaining a polished surface for all your collaborative endeavors.



## Simple Installation

Unlike glass and whiteboards, which can be bulky and challenging to transport, all Walltalkers collaboration surfaces are available in **flexible rolls** and shipped in tubes. The installation process is similar to that of commercial wallcoverings, making it a straightforward and hassle-free project.



## Super Durable

Walltalkers surfaces are designed to **withstand the continuous flow of brainstorming sessions**, day in and day out, empowering your team to generate ideas without limitations.



## 10 Year Warranty

Walltalkers wallcoverings are warranted for **10 Years**:

- Won't crack, chip, delaminate, or peel
- Resists staining and yellowing
- Shows no appreciable fade when properly cleaned and maintained and used with the appropriate dry-erase markers



## In Stock and Ready to Ship

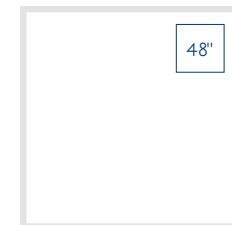
We are committed to customer satisfaction and **maintain a substantial inventory of Walltalkers products** to ensure quick turnaround times for our customers' projects.





## WRITABLE

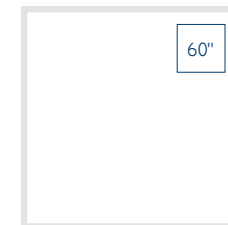
These high-quality and high-performance solutions feature a clean, bright surface for excellent readability and erasability.



48"

### Just-Rite® 48"

WHITE  
JR48-00  
Semi-Gloss Finish



60"

### Just-Rite® 60"

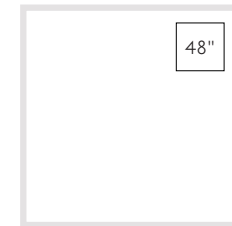
WHITE  
JR60-00  
Semi-Gloss Finish

.....  
EZ-Rite® and Just-Rite® 60 products meet the California Indoor Air Quality Specification (CA-IAQ 01350).



## WRITABLE + MAGNETIC

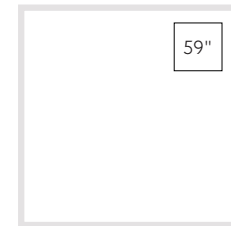
Enhance collaboration with Walltalkers solutions that allow you to easily write, erase, and display anything a magnet can hold (pictures, maps, color swatches - let your team's imagination run wild!).



48"

### Mag-Rite® 48"

WHITE  
M248-00  
Semi-Gloss Finish



59"

### Mag-Rite® 59"

NATURAL WHITE  
M259-00  
Semi-Gloss Finish



## WRITABLE + PROJECTION + MAGNETIC

When collaboration calls for writable, projectable, and magnetic receptive surfaces in the same space, Walltalkers comes through with an option that provides all three. Teams can draw their ideas on one of our walls, project a video to inspire the team during discussion, and hang some example references all within the same workspace. All you have to do is choose how to utilize the wall to make it work best for your interior solution.



48"

### Projectable Mag-Rite™

48"  
WHITE  
M2PR-00  
Matte Finish

# ALUMINUM ACCESSORIES FOR WRITABLE SURFACES

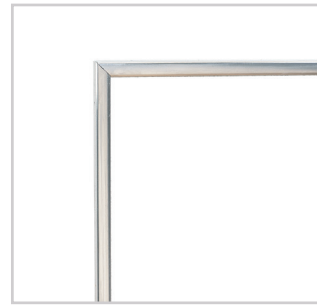
## STANDARD ALUMINUM TRIMS

Aluminum Trims are available in 4', 8', and 12' lengths in Satin, White, and Black.



**Aluminum Snap-on Trim**

Available in 1-1/4" and 1-3/4" widths



**Aluminum J-CAP Trim**

Visible width of 1/4"

## QUANTUM ALUMINUM TRAYS

Aluminum Trays are available in magnetic or mechanically fastened options in 18", 36", and 48" lengths.



**Silver Quantum**



**White Quantum**



**Black Quantum**

## STANDARD ALUMINUM TRAYS

Aluminum Trays are available in 4', 8', and 12' lengths in Satin, White, and Black.



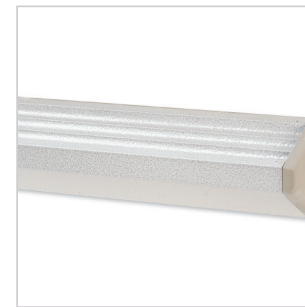
**Satin Tray Aluminum End Cap**



**Satin Tray Plastic Box End Cap**

## STRATUM ALUMINUM TRAYS

Aluminum Trays are available in Silver, White, and Gold with plastic box end caps in 18" lengths.



**White Stratum**

## SHELF CADDY

Shelf Caddies are available in magnetic or mechanically fastened options.



**Silver Caddy**



**White Caddy**



**Black Caddy**



# TAC-WALL®

## by Koroseal

Transform walls, doors, partitions, panels, room dividers, and more into decorative and functional spaces quickly and economically with Tac-Wall. It's a colorful linoleum/cork wallcovering that's self-healing and exceptionally resilient - resistant to cracking, drying, or peeling. The natural quality of Tac-Wall inhibits contaminants, providing a low-maintenance tackable solution for your workspace. You can also design freely with custom full wall applications or mural Tac-Wall shapes.



### Features

- Tackable and durable alternative to bulletin boards or cork tiles that can crumble and deteriorate
- Noise Reduction Coefficient (NRC) is 0.10 for acoustic characteristics
- Natural self-sanitizing quality of linoleum inhibits contaminants for resistance to bacteria
- Self-healing surface and colored throughout to ensure colorfastness and eliminate fading
- Naturally anti-static, repelling dirt and dust to make cleaning easier



42% of Tac-Wall is manufactured with **pre-consumer recycled** content and more than 87% is made from **rapidly renewable resources**.



**SURFACE FINISH:** Matte

**COLORS:** 15 Tackable Colors

**BACKING:** Jute / Burlap provides excellent adhesion and dimensional stability

**WIDTH:** 48" (122 cm) flexible rolls

**LENGTH:** + 90 lin. ft. (27 m)

**APPROX. WEIGHT:** 8.22 lbs./yd<sup>2</sup> (3.73 kg/m<sup>2</sup>)

**THICKNESS:** 0.25" (6 mm)

All Tac-Wall® products meet the California Indoor Air Quality Specification (CA-IAQ 01350)

# KEY FEATURES

## High Quality

Walltalkers products are made with the highest-quality materials and use a meticulous lamination process to ensure 100% uniform coverage of the vinyl substrate.

The key to this process is laminating with our high-performance dry-erase film, which creates a surface that is exceptionally resistant to stains, impervious to solvents, and measurably more durable than inexpensive coatings and paints. That means no thin spots or “pin-holes” on the surface to let ink, stains, and solvents penetrate and discolor.

## Superior Durability

Our insistence on quality materials and processes results in a product that looks better and lasts longer for you. Walltalkers products use only the highest-quality materials to ensure our surfaces maintain their flexibility and performance without cracking, chipping, peeling, or deteriorating, even under daily use.

## Easy Maintenance

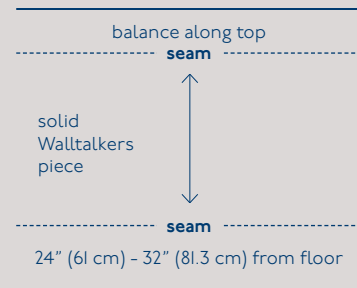
All it takes is simple care to preserve and protect the beauty and performance of a Walltalkers surface. Typical dirt and stains can be removed by simply wiping with a damp cloth or sponge and a mild soap or cleaner. Tougher stains can be tackled with more powerful cleaners. Unlike other wallcoverings, Walltalkers products are impervious to most chemical solvents that can break down, discolor, and even deteriorate surfaces.

Walltalkers recommends specific markers for optimum performance, and marking can be left on the surface for as long as needed. Removal is always easy and complete because our products are exceptionally stain-resistant. They won't discolor even if they come in contact with things like permanent markers, crayons, coffee, lipstick, ketchup – even wine.

## Simple Installation

Walltalkers collaboration surfaces come in flexible rolls and install like most commercial wallcoverings. Simple instructions guide installers through the process of applying Walltalkers products to a clean, smooth, and sealed surface.

Horizontal seams are recommended when installing Walltalkers. For virtually invisible seams and 100% useable presentation surfaces floor-to-ceiling and wall-to-wall, we recommend double-cutting all seams and railroading the vinyl (see diagram) to ensure color matching.



**PRIOR TO USING all Walltalkers products should be washed with an ammonia or alcohol-based cleaner or mild soap and rinsed thoroughly with water.**

## 10-YEAR Warranty

Walltalkers wallcoverings are warranted for **10 YEARS:**

- Won't crack, chip, delaminate, or peel
- Resists staining and yellowing
- Shows no appreciable fade when properly cleaned and maintained and used with the appropriate dry-erase markers

# PRODUCT COMPARISON

Product	Use					Surface Gloss	Backing	Width
	Projectable	Magnetic	Writable	Color	Tackable			
<b>WRITABLE</b>								
Just-Rite® JR48			◆			Semi-gloss	woven	47/48" (119/122 cm)
Just-Rite® JR60			◆			Semi-gloss	woven	59/60" (150/152 cm)
<b>WRITABLE + MAGNETIC</b>								
Mag-Rite® M248		◆	◆			Semi-gloss	woven	47/48" (119/122 cm)
Mag-Rite® M259		◆	◆			Semi-gloss	woven	59/60" (151/152 cm)
<b>WRITABLE + PROJECTION + MAGNETIC</b>								
Projectable Mag-Rite™ M2PR	50%	◆	◆			Matte	woven	47/48" (119/122 cm)
<b>TACKABLE</b>								
Tac-Wall® 2-digit color number				15	◆	Matte	jute (burlap)	47/48" (119/122 cm)

OUR SURFACES GO TOGETHER...SO IDEAS CAN COME TOGETHER.



Unless otherwise attributed herein, all trademarks herein designated by ® and ™ are registered trademarks and trademarks, respectively, of Koroseal Interior Products, LLC. ©2026

855.753.5474 | [koroseal.com/walltalkers](http://koroseal.com/walltalkers)