

TAKUMI™

Artisan Crafted Wallcoverings

HANGING INSTRUCTIONS

CATEGORY: Exquisite Foils

PATTERNS: TAK-AA02, TAK-AA03, and TAK-AA09 Series

STOP! PLEASE READ BEFORE USING:

TAKUMI wallcoverings are handcrafted by artisans using the finest materials. We recommend a professional wallcovering installer carry out the installation. If you have any questions about the proper installation of this product, please call your Distributor before proceeding.

EXAMINATION OF GOODS:

Prior to cutting or installation, ensure the pattern, color, quantity and quality are as ordered. TAKUMI Wallcoverings are handmade from natural materials. As such some variation in appearance between strips is expected. If no concerns are noted the material should be inspected again after three strips are installed. If any concerns are noted (or at any subsequent point during the installation) stop and contact your distributor. **NO CLAIMS WILL BE ALLOWED FOR MORE THAN (3) STRIPS OF INSTALLED MATERIAL.** Claims must be initiated within 30 days of the invoice date. No labor claims will be allowed at any time.

INSTALLATION PREPARATION:

The building must be climate controlled with HVAC maintained at ongoing occupancy conditions for (48) hours before, during and after installation. Installation surfaces must be structurally sound and free of excessive moisture. Moisture content of walls should not exceed 4%.

NEW PLASTER:

Allow wall to completely cure for 60 to 90 days. Walls should be checked with a suitable moisture meter. Use a good quality pigmented acrylic wallcovering primer following the manufacturer's instructions for a proper installation and product performance.

NEW DRYWALL:

Use a good quality pigmented acrylic wallcovering primer following the manufacturer's instructions for a proper installation and product performance.

PAINTED SURFACE:

The surface should then be primed with a good quality pigmented acrylic wallcovering primer following the manufacturer's instructions.

EXISTING WALLS:

Glossy surfaces should either be sanded to dull the surface, or a heavy-duty, white pigmented primer should be applied to the wall surface following the manufacturer's instructions. All surface imperfections should be repaired and sanded to a smooth level.

MORTAR / WOOD:

The surface should be sealed and primed to prevent discoloration of the wallcovering.

THIS PRODUCT IS NOT INTENDED TO BE INSTALLED IN WET / HUMID ENVIRONMENTS OR OVER SURFACES SUCH AS METAL, PLASTIC OR GLASS.

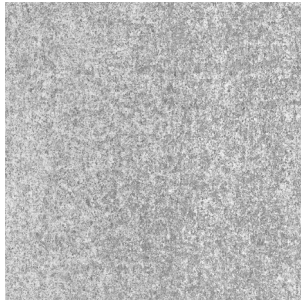
PATTERN MATCH:

This foil wallcovering is a random match product made of natural materials and will exhibit paneling to some extent. The lengths of wallcovering should be laid out prior to installation so that the best sequence and orientation can be determined to minimize the paneling effect. The wallcovering should be table trimmed for best results.

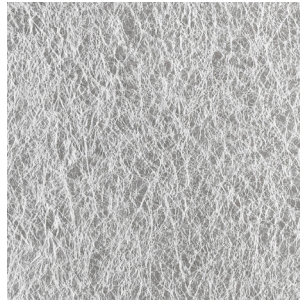
HANGING INSTRUCTIONS

CATEGORY: Exquisite Foils

PATTERNS: TAK-AA02, TAK-AA03, and TAK-AA09 Series



TAK-AA02 Series
(3 colorways)



TAK-AA03 Series
(2 colorways)



TAK-AA09 Series
(3 colorways)

PASTING:

1. An undiluted Heavy-Duty Ultra Clear Wallcovering paste, such as Roman PRO-880, is recommended for installation.
2. Apply paste to the back of the wallcovering taking care to keep the decorative surface clean. Paste will stain the decorative surface. A paste machine should not be used. Paste one strip at a time.

BOOKING:

1. Fold the wallcovering loosely pasted surface to pasted surface taking care not to get paste on the decorative surface. Avoid tight folds or creasing the wallcovering during booking.
2. Allow booked strips of wallcovering to rest 5 minutes prior to applying to the wall surface.

APPLICATION OF WALLCOVERING:

1. Choose an inconspicuous starting location that will enable the best match at completion of the installation.
2. Create a plumb line and align the first strip even to this reference.
3. Lengths of wallcovering should be cut allowing for proper match plus 1-inch overage top and bottom.
4. Hang the wallcovering and smooth using a soft bristle smooth brush. Smooth the wallcovering to the wall surface working from center to edges of each strip.
5. Repeat steps 3 through 4 for each strip of wallcovering and wall surface to be covered.
6. Inside corners should be cut for best results.

TIPS:

1. Care should be taken to avoid getting excess paste or moisture on the decorative surface to prevent damage.
2. Change cutting blades often. A sharp edge is important and the product will dull the edge quickly.
3. To prolong the life of the wallcovering direct sunlight and sudden change in temperature should be avoided.
4. Do not attempt to clean the wallcovering with water or household cleaning agents. Use a soft brush or vacuum.