

# ADVANCED SOLUTIONS FOR EDUCATIONAL ENVIRONMENTS

SAFE FOR  
USE WITH MANY  
**EPA LIST N**  
DISINFECTANTS\*



**zolatone**  
INTERIOR COATINGS

# ZOLATONE KEY FEATURES



STRONG



COLORFUL



LOW EMITTING



EASY

---

## 5 to 10X Stronger Than Regular Paints

Are traditional paints not holding up to the bag marks, kick marks, and everyday traffic of your facility? Zolatone's legendary coatings are washable, scrubbable, and their texture masks imperfections in the surface. Zolatone will succeed in the high traffic areas of your facility where traditional paints have failed.

---

## Wide Array of Pearl, Metallic & Textured Colors

Do you wish paint had a little more dimension? A little more pop? Zolatone coatings have the tactile, dimensional quality you've been searching for. Zolatone offers distinctive looks in a huge variety of colors that will rejuvenate old tile, scuffed walls, CMU block and more.

---

## Contributes Toward LEED Credits

Specifying a highly durable product doesn't mean you have to specify a toxic product. Zolatone achieves its durability by using premium ingredients and resins in a water-based product that contributes towards LEED credit EQ4.2

---

## Simple to Install, Touch Up & Maintain

Zolatone offers a host of assistance to guide users through the installation, touch up, repair, cleaning, and disinfecting process.

- Application Guides / Videos
- Touch-up / Repair Videos
- Phone Support
- Product Training
- List N Disinfectant Use
- Specification Assistance

# Zolatone Overview

Hundreds of additional colors in each Zolatone finish are available online at [Zolatone.com](http://Zolatone.com) or by contacting your Koroseal representative.

## PFX COUNTERPOINTE



Pearlescent pigments give Counterpointe colors a lively, light reflective glimmer.

**SCRUB RATING**  
4795 Scrubs (ASTM D-2486)

**COVERAGE**  
Up to 110 square feet per gallon

**VOC CONTENT**  
Less than 60 grams per liter



## ZFX LLUMINATIONS



Mica flecks add a shimmer to Luminations that ordinary paints can't match.

**SCRUB RATING**  
3000 Scrubs (ASTM D-2486)

**COVERAGE**  
Up to 150 square feet per gallon

**VOC CONTENT**  
Less than 60 grams per liter



## ZML METAL



Metallic flecks and pearly pigments give Metal colors a bright and tactile look.

**SCRUB RATING**  
3000 Scrubs (ASTM D-2486)

**COVERAGE**  
Up to 110 square feet per gallon

**VOC CONTENT**  
Less than 100 grams per liter



## PLX POLOMYX



Polychromatic color with a natural look and just a hint of movement.

**SCRUB RATING**  
5130 Scrubs (ASTM D-2486)

**COVERAGE**  
Up to 170 square feet per gallon

**VOC CONTENT**  
Less than 50 grams per liter



## PXA POLOMYX AIRLESS



The Polomylx look with an easy and economical airless spray application.

**SCRUB RATING**  
4500 Scrubs (ASTM D-2486)

**COVERAGE**  
Up to 160 square feet per gallon

**VOC CONTENT**  
Less than 50 grams per liter



## FLX FLEX DIMENSIONS



Flex Dimensions adds an inviting textural element to interiors.

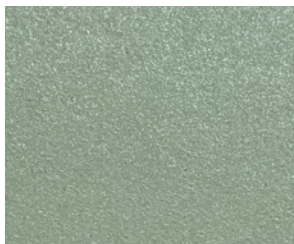
**SCRUB RATING**  
5000 Scrubs (ASTM D-2486)

**COVERAGE**  
Up to 160 square feet per gallon

**VOC CONTENT**  
Less than 50 grams per liter



## FXP FLEX PEARL



Pearl colorants and natural mica give Flex Pearl a shimmering look.

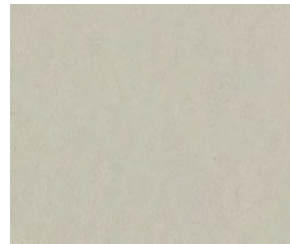
**SCRUB RATING**  
3000 Scrubs (ASTM D-2486)

**COVERAGE**  
Up to 160 square feet per gallon

**VOC CONTENT**  
Less than 50 grams per liter



## FPC FLEX PURE COLOR



100% acrylic eggshell paint featuring advanced Stain Relief Technology.

**SCRUB RATING**  
3000 Scrubs (ASTM D-2486)

**COVERAGE**  
Up to 350 square feet per gallon

**VOC CONTENT**  
43 grams per liter



## Strayer University



Scan to see more about Zolatone and Strayer University

Facility managers at Strayer University's active Washington D.C. campus noticed that the main corridor area was regularly getting damaged and repairing the space took a lot of time and money.

- Strayer chose Flex for its durability and easy application
- Flex repairs and touch ups were easy to make
- Strayer is now using Flex in additional areas and facilities

---

## Salisbury University



Scan to see more about Zolatone and Salisbury University

Salisbury University faced a major challenge with its large, 605 bed residence hall. Their specified paint was NOT holding up to move-in traffic and was in need of constant repainting.

- The facility team performed a mock up and found that Zolatone was easy to install and performed well under move in traffic and daily pedestrian traffic
- The Maintenance team could maintain the Zolatone surface and remove dirt and stains with just a washcloth
- Salisbury went on to apply Zolatone to several of their building's 1/4 mile long corridors

---

## Lecom

Lecom School Of Dental Medicine

LECOM School of Dental Medicine in Bradenton Florida built a state-of-the-art \$52 million facility featuring two large lecture classrooms, a 4,500 square foot simulation classroom and a 115-chair public clinic. This 100,000 square foot building features over 3,000 gallons of Zolatone's Luminations on every wall of the campus.



**“Most of the time if you repair a wall you have to repair the entire wall. You have to go corner to corner to get a consistent look and not have a patch. With Flex you don’t have to do that.”**

Diran Corria  
Project Architect Strayer university

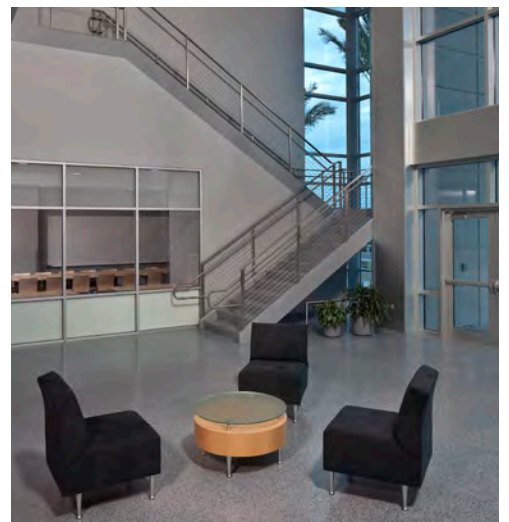
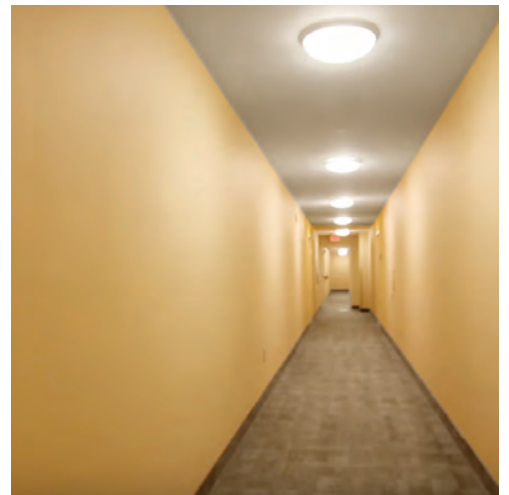
---



**“If something does come up, we can touch it up in-house. It should last 8-10 years easy, under very high traffic. This is the first thing that has worked in this building!”**

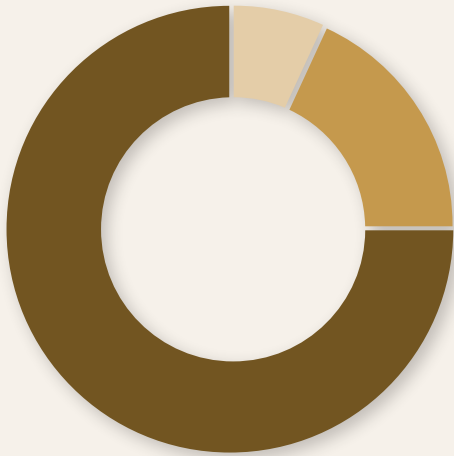
Jim Miller  
Assistant Director for Building Trades  
Salisbury University

---



# CREATE A BOLD NEW LOOK WHILE REDUCING PAINTING EXPENSES

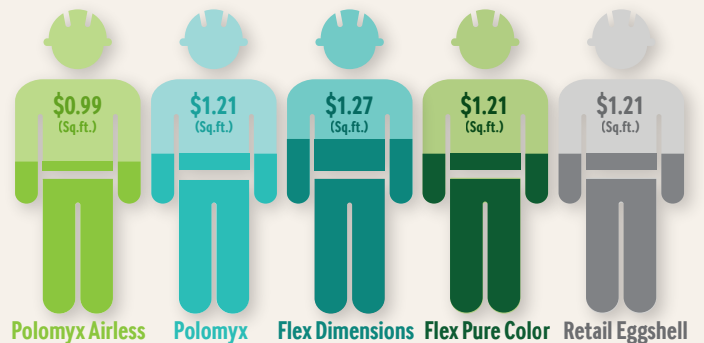
## 1. Project Expenses:



**75% LABOR**  
**15% PAINT**  
**10% PRIMER**

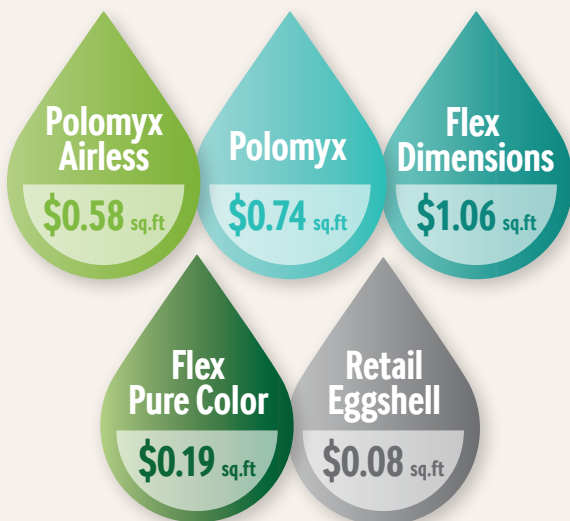
The majority of most painting budgets goes toward application. Paint is actually a small part of a project's overall cost. To save money on painting, it's smarter to reduce labor costs than paint costs.

## 2. Labor Costs:



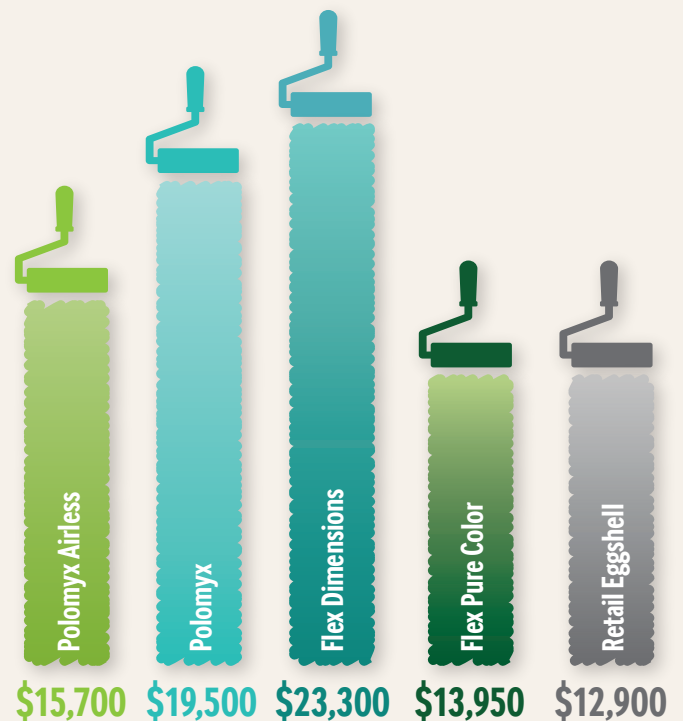
Here is a look at typical install prices for a variety of Zolatone products as well as a traditional interior eggshell paint from a retail paint distributor. They are very competitive.

## 3. Material Costs:



Long lasting, multicolor paint like Zolatone costs more than retail eggshell paint initially, but Zolatone needs less repainting—which can lead to big savings over time.

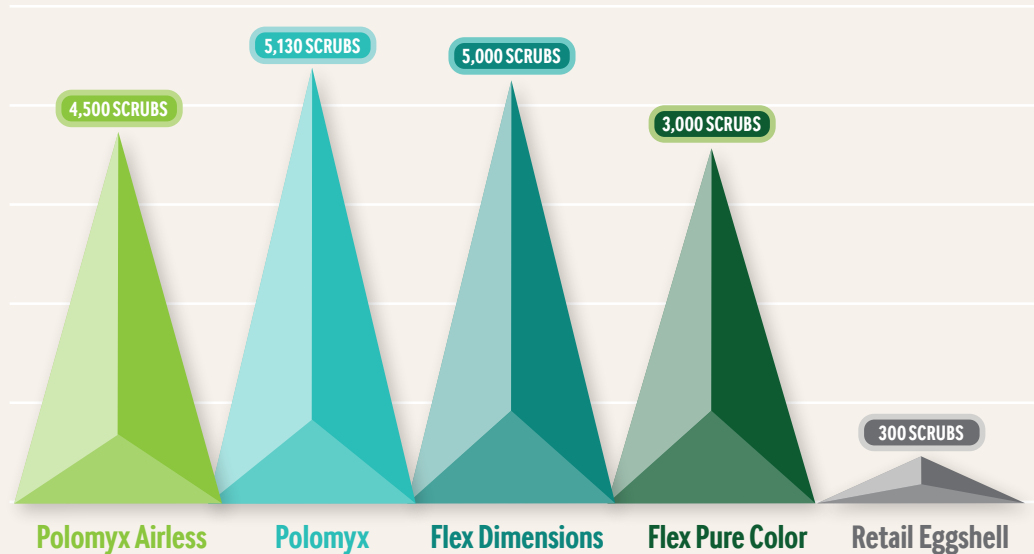
## 4. Total Expense (10,000 sq ft job):



Next, we break out our material and labor expenses over a 10,000 square foot project. We can see that using budget paint is the cheapest option. But is it the best value? Let's find out...

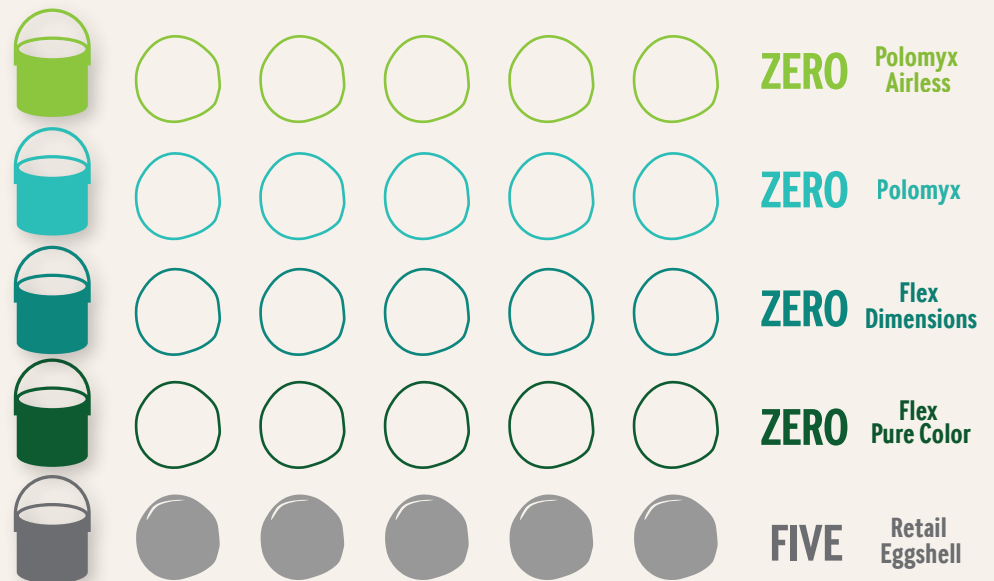
## 5. Performance Rating:

How can you tell how tough a paint is? We use the ASTM D-2486 Scrub Test. In this test, paints are scrubbed with an abrasive brush until their surface fails. This determines a paint's "scrubs to failure" or "scrub rating." Higher scrub ratings mean stronger paints that will stand up to people traffic and frequent cleaning.

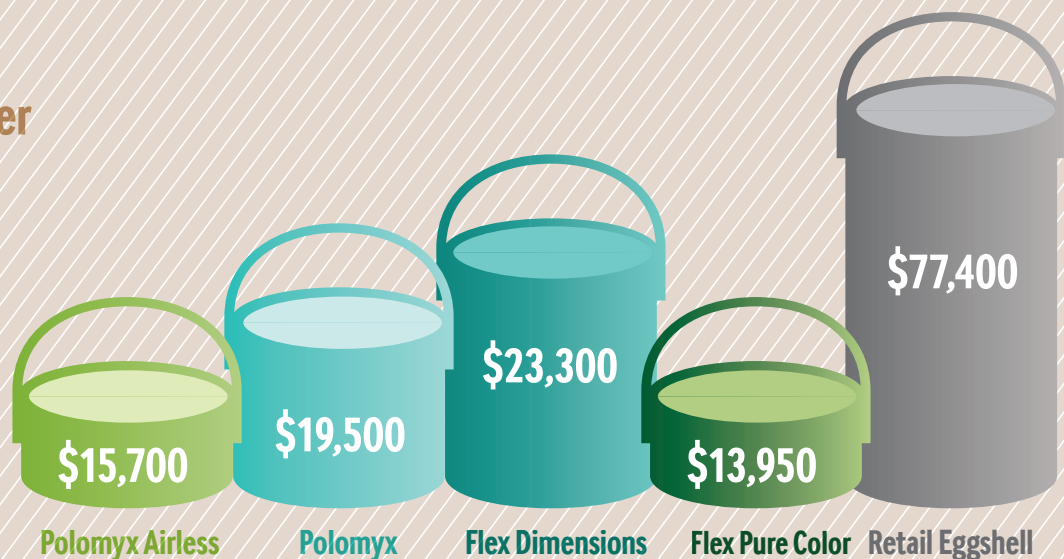


## 6. Repaints Over 10 Years:

We regularly meet with building owners and facility managers who face the prospect of painting and repainting annually. Some owners of high traffic spaces report painting as often as twice a year! With labor being the biggest part of a paint project, that can quickly triple project budget and then some.



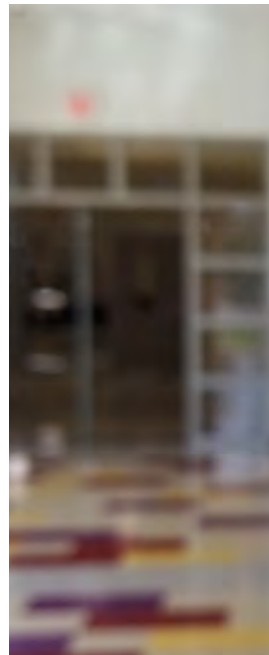
## Total Cost of Ownership over Ten Years:





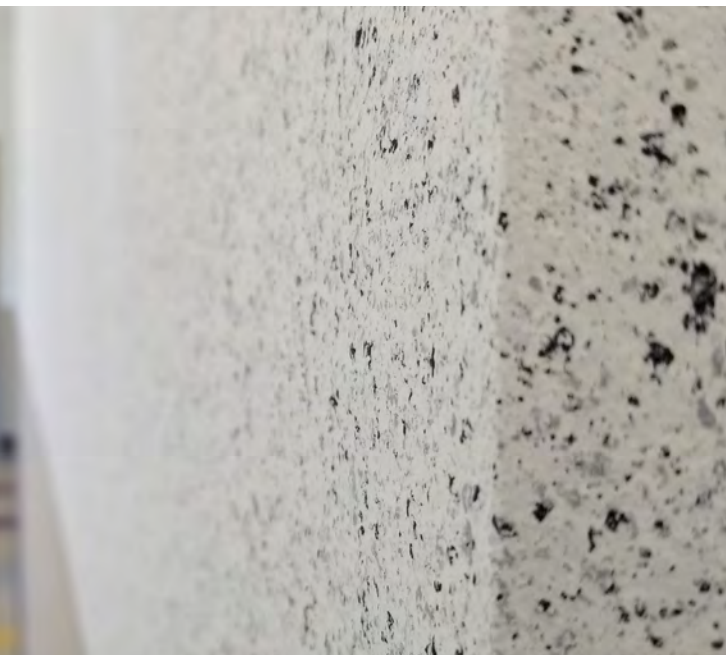
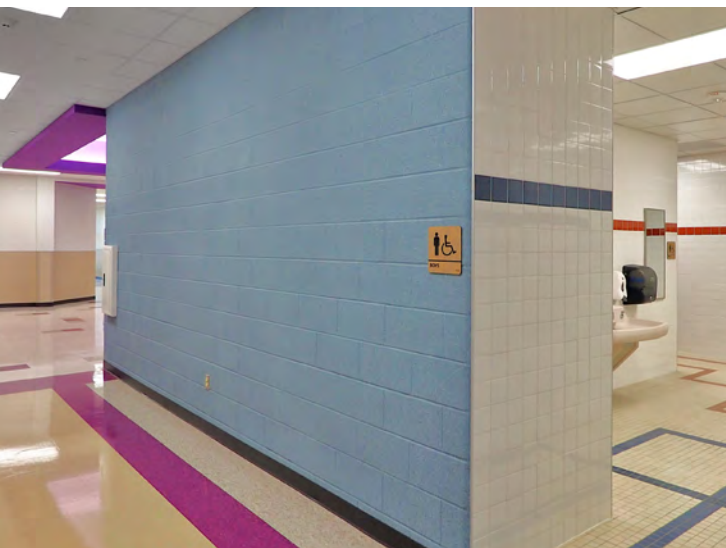
## Aldine Independent School District Case Study

The vision of Texas's Aldine Independent School District (Aldine ISD) is to "Produce the Nation's Best." And for that to happen, its physical environments needed to be durable and inspiring.



That's part of the reason why Zolatone® Interior Coatings have been utilized for several of the district's building interiors, including its recently completed elementary school. With a distinctive, diverse color palette and unique textural options, Zolatone delivers multicolor finishes that can be easily cleaned and maintained—ideal for schools and other environments where heavy traffic and contact are constant.





**“ Zolatone makes wall surfaces easier to clean, and it stands up well to mask markings from hand and fingerprints, and overall it doesn’t generally require a lot of maintenance. ”**

LaTonya Tennyson  
Senior Project Coordinator with MWA Architects

**D**uring the summer of 2018, Aldine ISD unveiled its new Lou Vardeman School for early childhood, pre-K and kindergarten students. Serving about 800 students each day, the new school was designed by Molina Walker Almaguer Architects, Inc. (MWA Architects), a Houston-based firm and one of the region’s leading designers of educational facilities.

Aldine ISD and MWA Architects have worked closely on many of the district’s state-of-the-art buildings for a number of years and have utilized Zolatone coatings throughout many of them. As a 100 percent acrylic, textured coating with varying shades and layers of colored particles, Zolatone offers movement and depth not found in solid-color paints. This has allowed Aldine ISD to create learning environments with unique dimension, texture, and visual appeal.

At the new building, Zolatone was used throughout all classrooms, along with the school’s auditorium, dining hall, gymnasium and corridors. In a few instances, Zolatone was specified over more traditional surface options, allowing for more versatile color and finish options.

“Our firm has used Zolatone for years throughout numerous projects with Aldine ISD, and it has provided a number of benefits,” said LaTonya Tennyson, senior project coordinator with MWA Architects. “It makes wall surfaces easier to clean, and it stands up well to mask markings from hand and fingerprints, and overall it doesn’t generally require a lot of maintenance, making it easier for educators to preserve clean and attractive learning spaces.”

To create distinctive visual appeal throughout each of the classrooms, MWA Architects specified the Zolatone Polomyx finish, which helps create a beautiful tactile surface that performs as great as it looks. Marks and stains from everyday people traffic are concealed, so walls look better longer and require fewer repairs. Zolatone provided a custom Polomyx color for the classrooms, with a larger and more prominent speckling pattern, helping the architect and the school create a truly unique look that better masks dirt and stains that might occur.

And in addition to its visual appeal and performance, Zolatone Polomyx can be easily applied to just about any vertical interior surface with the right preparation, including CMU, brick, tile, cinder block, plaster, MDF, and previously painted surfaces. Installers can utilize conventional air spray equipment and guns, with the proper calibrations.

This allowed installers to stay on schedule while working to complete the numerous surfaces in the new school. And throughout the project, Tennyson noted that the Zolatone team was quick to provide exceptional service and support to solve any challenge that occurred.

“Our goal is always to complete our projects within the scoped timeline, so whenever any sort of issue may pop up, we appreciate working with vendors and suppliers who can provide quick-turn service.”

Overall, Aldine ISD has been pleased with the performance of Zolatone coatings in the new school as well as its other facilities where it has been applied throughout the years. It’s a testament to the product’s versatility, aesthetic benefits, and overall durability that can help enhance and protect interior surfaces in a range of applications.

# ZOLATONE COATINGS. THE IDEAL SURFACE FOR EPA LIST N DISINFECTANTS

**The COVID-19 Pandemic created an unprecedented increase in the size, scope, and urgency of professional disinfection. The advanced formulas in Zolatone Interior Coatings create a highly durable paint surface with excellent chemical resistance and class leading scrubability.**

- Zolatone can be cleaned and disinfected without burnishing like traditional paints
- Zolatone coatings withstand professional disinfecting with EPA List N disinfectants
- Residential paints can't meet the demands of the new cleaning protocols without burnishing or blistering
- Zolatone offers seamless protection for healthcare spaces and modern looks that do not require frequent repaints or complex repairs

## FOR LIGHT STAINS AND SCUFFS

1. Use a sponge, clean water, and a mild, non-abrasive cleaner (dish soap). Using cloth and an abrasive cleaner can burnish the surface.
2. Begin by lightly spraying water on to the stained area of surface.
3. Clean from the bottom upward to prevent streaking.
4. Change the water regularly.
5. When finished, lightly spray the area with clean water to remove any remaining cleaning residue.

## FOR HEAVY DISINFECTING

1. Clean surfaces with products like Fiberlock Advanced Peroxide Cleaner or Benefect Atomic Degreaser.
2. Disinfect surfaces after cleaning with Benefect Decon 30 or Fiberlock Shockwave to kill bacteria.

## FOR HEAVIER STAINS

1. For tougher stains, apply a natural citrus-based cleaner directly to the stained area. Do not use petroleum based cleaners, as these can damage the surface.
2. Rub the cleaner into the stained area until the stain is dissolved. Work from the clean area into the stained area.

3. Rinse with water to remove any remaining residue.



## HELPFUL TIPS

1. Do not use abrasive cleaners.
2. Test an inconspicuous area. Color, application, & ambient conditions can affect the performance of any coating.

# PREPARE YOUR SPACE FOR THE NEW STANDARDS OF CLEANING & DISINFECTING

## RECOMMENDED DISINFECTANTS FOR USE WITH ZOLATONE COATINGS

The following disinfectants appear on EPA list N for use against COVID-19. They have been shown to not adversely affect the surface of Zolatone coatings.

- Benefect Decon 30
- Benefect Disinfecting Wipes
- Fiberlock Shockwave RTU
- Peridox RTU
- 5-1 water to bleach dilution

**To test compatibility of disinfectants not included on this list, you may request samples of Zolatone products online at [Zolatone.com](https://www.zolatone.com) or by contacting your Zolatone representative.**

Our disinfectant compatibility testing was conducted on an installation of Zolatone Flex Pure Color Interior Coating that had been applied according to manufacturer instructions and allowed to cure for 28 days.

For areas requiring a daily / weekly cleaning schedule, or for pharmaceutical compounding areas that use sporicidal coatings, we recommend installing Flex Pure Color for maximum performance.

## EPA LIST N DISINFECTANTS

To aid the public in selecting disinfectants, the U.S. Environmental Protection Agency (EPA) produced and maintains a list of EPA-registered disinfectant products that have qualified for use against SARS-CoV-2, the novel Coronavirus that causes COVID-19.

According to EPA press releases, products appearing on EPA's list of registered disinfectant products have qualified for use against COVID-19 through the agency's Emerging Viral Pathogen program. This program allows product manufacturers to provide the EPA with data, even in advance of an outbreak, that shows their products are effective against harder-to-kill viruses than SARS-CoV-2.

Consumers should follow the directions for use on the product's master label, paying close attention to the contact time for the product on the treated surface (i.e., how long the disinfectant should remain on the surface).

## EPA PRESS RELEASE:

"Using the correct disinfectant is an important part of preventing and reducing the spread of illnesses along with other critical aspects such as hand washing. EPA is providing this important information in a public and transparent manner on disinfectant products to help reduce the spread of COVID-19."

**EPA Administrator  
Andrew Wheeler, 3/5/20**

\* For use in pharmaceutical compounding



**koroseal**®  
surface-scape your vision®

---

[www.koroseal.com](http://www.koroseal.com)  
855.753.5474

Visit [www.zolatone.com](http://www.zolatone.com) for LEED  
compliance, data sheets and SDS info