

TAKUMI™

Artisan Crafted Wallcoverings

HANGING INSTRUCTIONS

CATEGORY: Artist's Brush

PATTERNS: TAK-BA01, TAK-BB01, and TAK-BB02 Series

STOP! PLEASE READ BEFORE USING:

TAKUMI wallcoverings are handcrafted by artisans using the finest materials. We recommend a professional wallcovering installer carry out the installation. If you have any questions about the proper installation of this product, please call your Distributor before proceeding.

EXAMINATION OF GOODS:

Prior to cutting or installation, ensure the pattern, color, quantity and quality are as ordered. TAKUMI Wallcoverings are handmade from natural materials. As such some variation in appearance between strips is expected. If no concerns are noted the material should be inspected again after three strips are installed. If any concerns are noted (or at any subsequent point during the installation) stop and contact your distributor. **NO CLAIMS WILL BE ALLOWED FOR MORE THAN (3) STRIPS OF INSTALLED MATERIAL.** Claims must be initiated within 30 days of the invoice date. No labor claims will be allowed at any time.

INSTALLATION PREPARATION:

The building must be climate controlled with HVAC maintained at ongoing occupancy conditions for (48) hours before, during and after installation. Installation surfaces must be structurally sound and free of excessive moisture. Moisture content of walls should not exceed 4%.

NEW PLASTER:

Allow wall to completely cure for 60 to 90 days. Walls should be checked with a suitable moisture meter. Use a good quality pigmented acrylic wallcovering primer following the manufacturer's instructions for a proper installation and product performance.

NEW DRYWALL:

Use a good quality pigmented acrylic wallcovering primer following the manufacturer's instructions for a proper installation and product performance.

PAINTED SURFACE:

The surface should then be primed with a good quality pigmented acrylic wallcovering primer following the manufacturer's instructions.

EXISTING WALLS:

Glossy surfaces should either be sanded to dull the surface, or a heavy-duty, white pigmented primer should be applied to the wall surface following the manufacturer's instructions. All surface imperfections should be repaired and sanded to a smooth level.

MORTAR / WOOD:

The surface should be sealed and primed to prevent discoloration of the wallcovering.

PATTERN MATCH:

This woven wallcovering is made of natural materials and will exhibit paneling to some extent. The lengths of wallcovering should be laid out prior to installation so that the best sequence and orientation can be determined to minimize the paneling effect. The wallcovering should be overlapped and double cut or table trimmed for best results.

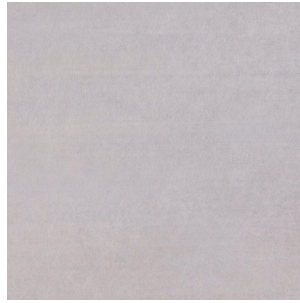
HANGING INSTRUCTIONS

CATEGORY: Artist's Brush

PATTERNS: TAK-BA01, TAK-BB01, and TAK-BB02 Series



TAK-BA01 Series
(2 colorways)



TAK-BB01 Series
(1 colorway)



TAK-BB02 Series
(2 colorways)

PASTING:

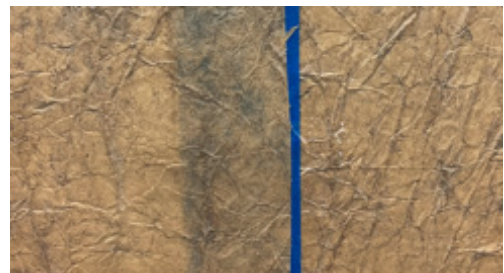
1. An undiluted Heavy-Duty Ultra Clear Wallcovering paste, such as Roman PRO-880, is recommended for installation.
2. Apply paste to the back of the wallcovering taking care to keep the decorative surface clean. Paste will stain the decorative surface. A paste machine should not be used. Paste one strip at a time.

BOOKING:

1. Fold the wallcovering loosely pasted surface to pasted surface taking care not to get paste on the decorative surface.
2. Allow booked strips of wallcovering to rest 3 to 5 minutes prior to applying to the wall surface. Do not book longer than 5 minutes to avoid delamination of the backing or staining of the decorative surface.

APPLICATION OF WALLCOVERING:

1. Choose an inconspicuous starting location that will enable the best match at completion of the installation.
2. Create a plumb line and align the first strip even to this reference.
3. Lengths of wallcovering should be cut allowing for proper match plus 1-inch overage top and bottom.
4. Hang the wallcovering and smooth using a soft bristle smooth brush. Smooth the wallcovering to the wall surface working from center to edges of each strip.
5. Apply 2-inch easy release painters tape the length of the installed sheet. Install the second length of wallcovering overlapping the first onto the taped surface (this will prevent paste staining the surface during double cutting of the seam).



6. Double cut the seam and trim the wallcovering at the ceiling and baseboard using a fresh, sharp blade and straight edge. Avoid getting paste on the decorative surface.
7. Repeat steps 3 through 6 for each strip of wallcovering and wall surface to be covered.
8. Inside corners should be cut for best results.

TIPS:

1. Care should be taken to avoid getting excess paste or moisture on the decorative surface to prevent damage.
2. Change cutting blades often. A sharp edge is important and the product will dull the edge quickly.
3. Do not roll seams.
4. To prolong the life of the wallcovering direct sunlight and sudden change in temperature should be avoided.
5. Do not attempt to clean the wallcovering with water or household cleaning agents. Use a soft brush or vacuum.