

H100-S ANTI-LIGATURE HANDRAIL



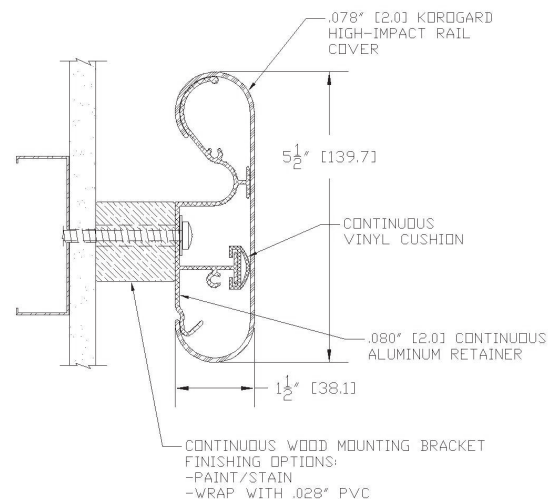
The Korogard H100-S Handrail is a 5-1/2" (139.77mm) rail with a full-length vinyl bumper and continuous aluminum retainer. The H100-S design provides continuous closure between the handrail and wall surface intended to discourage ligature attachment. With sturdy continuous mounting block maintaining wall clearance and stability, the H100-S provides ambulatory support and wall protection in medium- to high-impact areas. Rigid plastic End and corner caps are available. Optional reveals for the end and corner caps provide additional design options.

The Korogard H100-S Handrail conforms to current ADA regulations and is backed by a limited five-year warranty. All Handrails are Class I/A fire-rated and meet national building code standards. All Korogard linear profiles color-coordinate with a multitude of Koroseal Wallcovering for a systems approach to wall protection.

For more information on Korogard Handrails or the Korogard Wall Protection System, please call your local Korogard distributor.

H100-S ACCESSORY ITEMS

H105	Splice Kit
H121	Rigid End Cap (Plastic)
H123	90° Rigid Corner Cap (Plastic)
H124	135° Rigid Corner Cap (Plastic)
H131	Rigid End Cap (Plastic) w/Reveal
H133	90° Rigid Corner Cap (Plastic) w/Reveal
H134	135° Rigid Corner Cap (Plastic) w/Reveal



Product Guide Specification

SECTION 10 26 00

HANDRAILS

PART 1 GENERAL

1.01 SECTION INCLUDES

5-1/2" (139.7mm) Handrail/Bumper Systems.

1.02 SUBMITTALS

- A. Submit in accordance with Section 01 33 00— Submittals.
- B. Product Data: Submit manufacturer's product data.
- C. Shop Drawings: Submit shop drawings showing components, dimensions, and anchorage details.
- D. Samples: Submit for approval 12" (304.8mm) long sample for each model, color, and finish specified, including end caps and corner units.
- E. Test Reports: Submit manufacturer's test reports and certification indicating compliance with applicable ADA and building code requirements.

1.03 QUALITY ASSURANCE

Comply with NFPA 101® for interior finish materials. Smoke developed less than 450 and flame spread of 25 or less in accordance with ASTM E 84.

1.04 DELIVERY, STORAGE, AND HANDLING

- A. Delivery: Deliver materials to site in manufacturer's original, unopened containers and packaging, with labels clearly identifying product name and manufacturer.
- B. Storage: Store materials in clean, dry location, protected against damage of any kind.
- C. Handling: Protect materials during handling and installation to prevent damage.

PART 2 PRODUCTS

2.01 MANUFACTURER

Koroseal Wall Protection Systems,
A Division of RJF International Corporation.

2.02 HANDRAIL/BUMPER SYSTEMS

Koroseal "Korogard" H100-S Anti-Ligature Handrail: Handrail mounted over continuous aluminum retainer and full-length vinyl bumper cushion with continuous Korogard-clad mounting block maintaining wall clearance and providing un-interrupted closure between rail and wall surface.

1. Dimensions

- a. Height: 5-1/2" (139.7mm).
 - b. Width: 1-1/2" (38.1mm).
 - c. Clear Grip Space from Wall: 1-1/2" (38.1mm).
2. Profile: High-impact vinyl acrylic extrusion locked in place, nominal 0.078" (1.98mm) thick. Class I/A fire rating, when tested in accordance with ASTM E 84.
 3. Extrusion: Pebble grain finish. Contains EPA-registered Micro- Chek antimicrobial agent.
 4. Retainer: Continuous 6063-T6 aluminum retainer along entire length of Handrail/Bumper, minimum 0.080" (2.03mm) thick.
 5. Mounting Block: Continuous 1-1/2" sq. wood blocking clad on three sides with .028" Korogard sheet. Ends shaped to fit and close to back of End & Corner Caps.
 6. End Caps: Rigid plastic wall return unit of color and texture similar to that of rail.
 7. Corners: Internal and external corner units of similar material to end cap units. Carry line of Handrail/Bumper continuously around corner unless otherwise indicated on drawings.
 8. Optional Reveal: Black 1/8" (3.2mm) wide flexible PVC insert between profile cover and end cap/corner provides aesthetic design option.

PART 3 EXECUTION

3.01 EXAMINATION

Verify by examination that wall surfaces are acceptable to receive the specified Handrail/Bumper Systems. Notify the Architect in writing if wall surfaces are not acceptable. Do not begin installation until unacceptable conditions have been corrected.

3.02 INSTALLATION

- A. Install Handrail/Bumper Systems to wall securely in accordance with manufacturer's written instructions.
- B. Install Handrail/Bumper Systems accurately in location, alignment, and elevation.
- C. Provide horizontal steel stud back-up in drywall stud cavity to accept fasteners.