

DURABLE, DISTINCTIVE FINISHES FOR HEALTHCARE ENVIRONMENTS



ZOLATONE KEY FEATURES



STRONG



COLORFUL



LOW EMITTING



EASY

5 to 10X Stronger Than traditional Paints

Are traditional paints not holding up to the bag marks, kick marks, and everyday traffic of your facility? Zolatone's legendary coatings are washable, scrubbable, and their texture masks imperfections in the surface. Zolatone will succeed in the high-traffic areas of your facility where traditional paints have failed.

Wide Array of Pearl, Metallic & Textured Colors

Do you wish paint had a little more dimension? A little more pop? Zolatone coatings have the tactile, dimensional quality you've been searching for. Zolatone offers distinctive looks in a huge variety of colors that will rejuvenate old tile, scuffed walls, CMU block and more.

Contributes Toward LEED Credits

Specifying a highly durable product doesn't mean you have to specify a toxic product, Zolatone achieves its durability by using premium ingredients and resins in a water-based product that contributes towards LEED credit EQ4.2

Simple to Install, Touch-Up & Maintain

Zolatone offers a host of assistance to guide users through the installation, touch up, repair, cleaning, and disinfecting process.

- Application Guides / Videos
- Touch-up / Repair Videos
- Phone Support
- Product Training
- List N Disinfectant Use
- Specification Assistance

Zolatone Overview

Hundreds of additional colors in each Zolatone finish are available online at Zolatone.com or by contacting your Koroseal representative.

PFX COUNTERPOINTE



Pearlescent pigments give Counterpointe colors a lively, light reflective glimmer.

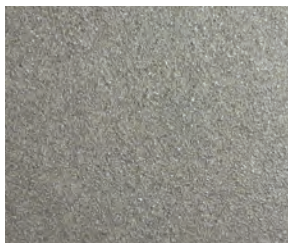
SCRUB RATING
4795 Scrubs (ASTM D-2486)

COVERAGE
Up to 110 square feet per gallon

VOC CONTENT
Less than 60 grams per liter



ZFX LLUMINATIONS



Mica flecks add a shimmer to Luminations that ordinary paints can't match.

SCRUB RATING
3000 Scrubs (ASTM D-2486)

COVERAGE
Up to 150 square feet per gallon

VOC CONTENT
Less than 60 grams per liter



ZML METAL



Metallic flecks and pearly pigments give Metal colors a bright and tactile look.

SCRUB RATING
3000 Scrubs (ASTM D-2486)

COVERAGE
Up to 110 square feet per gallon

VOC CONTENT
Less than 100 grams per liter



PLX POLOMYX



Polychromatic color with a natural look and just a hint of movement.

SCRUB RATING
5130 Scrubs (ASTM D-2486)

COVERAGE
Up to 170 square feet per gallon

VOC CONTENT
Less than 50 grams per liter



PXA POLOMYX AIRLESS



The Polomox look with an easy and economical airless spray application.

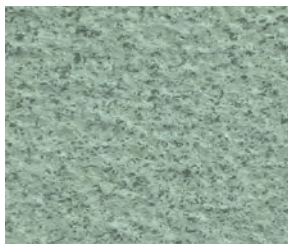
SCRUB RATING
4500 Scrubs (ASTM D-2486)

COVERAGE
Up to 160 square feet per gallon

VOC CONTENT
Less than 50 grams per liter



FLX FLEX DIMENSIONS



Flex Dimensions adds an inviting textural element to interiors.

SCRUB RATING
5000 Scrubs (ASTM D-2486)

COVERAGE
Up to 160 square feet per gallon

VOC CONTENT
Less than 50 grams per liter



FXP FLEX PEARL



Pearl colorants and natural mica give Flex Pearl a shimmering look.

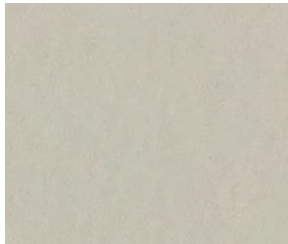
SCRUB RATING
3000 Scrubs (ASTM D-2486)

COVERAGE
Up to 160 square feet per gallon

VOC CONTENT
Less than 50 grams per liter



FPC FLEX PURE COLOR



100% acrylic eggshell paint featuring advanced Stain Relief Technology.

SCRUB RATING
3000 Scrubs (ASTM D-2486)

COVERAGE
Up to 350 square feet per gallon

VOC CONTENT
43 grams per liter



PROVEN SYSTEMS & SEAMLESS PROTECTION

Zolatone

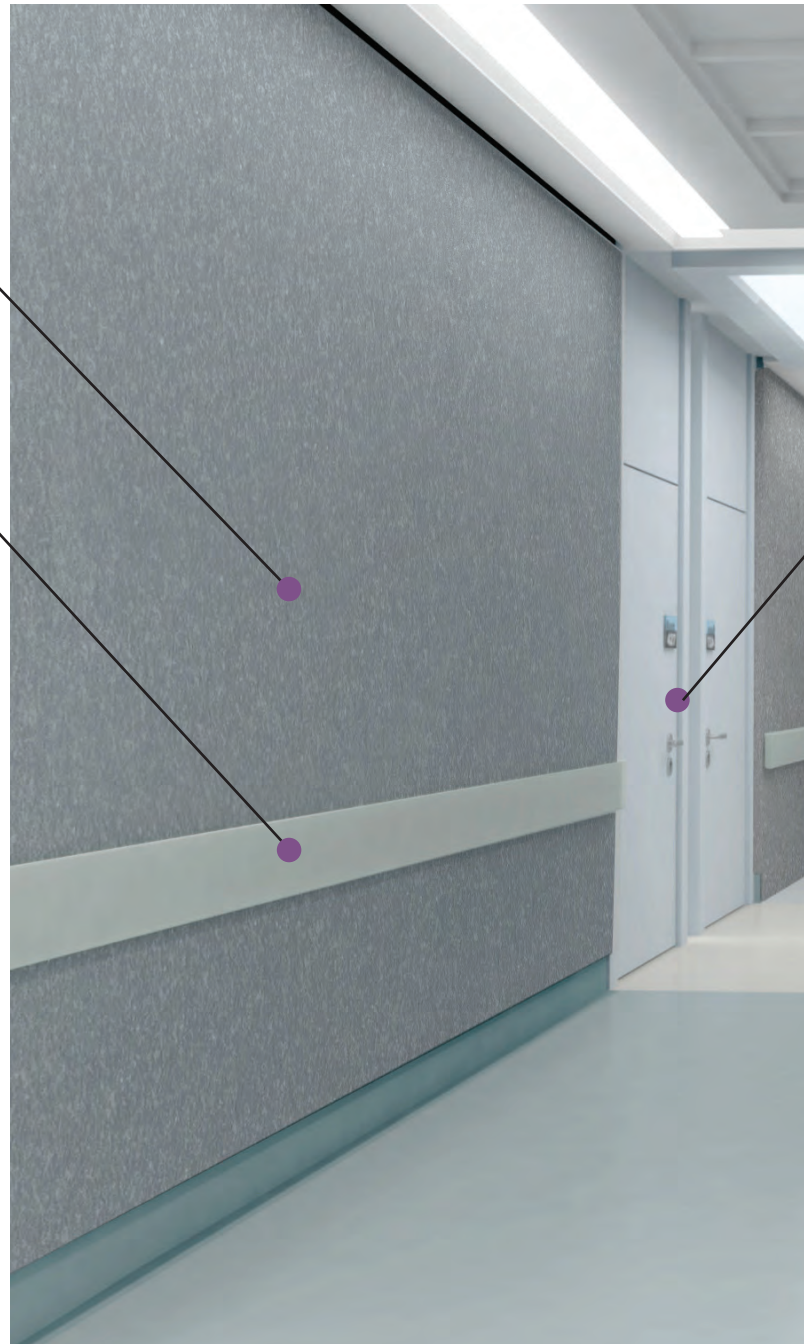
Polomyx
PLX-5230

Korogard® C660

Vinyl Crash Rail
Pewter

Spaces that provide healthcare need to look healthy themselves. This can be difficult to achieve in high traffic areas like hospitals and clinics where wheelchairs, carts, sanitizer dispensers, and disinfectants cause unsightly damage. Zolatone offers durable modern looks with minimal environmental impact.

- Zolatone Performance Coatings are the ultimate way to protect and maintain the integrity and style of active healthcare spaces.
- Zolatone Coatings are integral in creating functional, beautiful systems to protect walls and corridors from the damage commonly seen in healthcare settings.
- Zolatone Coatings reduce the number of costly and disruptive repairs and repaints.



Korogard® F360

Vinyl Door Frame Guard
Pewter

Korogard® G100

Vinyl Corner Guard
Pewter



Legendary performance with the ease of a water-based coating.



Zolatone Coatings are the premium choice for healthcare communities. Zolatone combines the benefits of epoxy paints with the ease of water based paints. Zolatone's specialized finishes are more washable, cleanable, and mar resistant and free of latex (unlike competing products).

Zolatone Coatings

- ⚡ **Easier to apply than epoxy**
- ⚡ **Seamless** (won't trap contaminants)
- ⚡ **Highly durable** (Scrub ratings of 5130)
- ⚡ **Water based** (unlike epoxies)
- ⚡ **Distinct look** (conceals scuffs in walls)
- ⚡ **Easy to clean** (withstands sporicidal cleaners)
- ⚡ **Lots of color options**
- ⚡ **Easy Clean up** (uses water, not solvents)

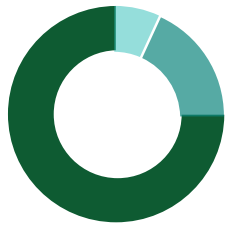
Epoxy Paints

- ❌ **Multiple cans / Mixing required**
- ❌ **Pot life issues**
- ❌ **Strong odor**
- ❌ **Yellows over time**
- ❌ **High VOC content**
- ❌ **Not for occupied spaces**

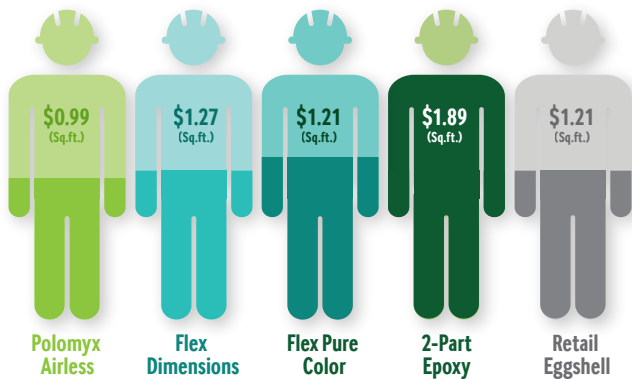
Retail Eggshell Paints

- ❌ **Low scrub rating** (average of 600)
- ❌ **Burnishes easily**
- ❌ **Needs regular repainting**
- ❌ **Not fit for high traffic areas**
- ❌ **Blisters** (when using strong cleaners)

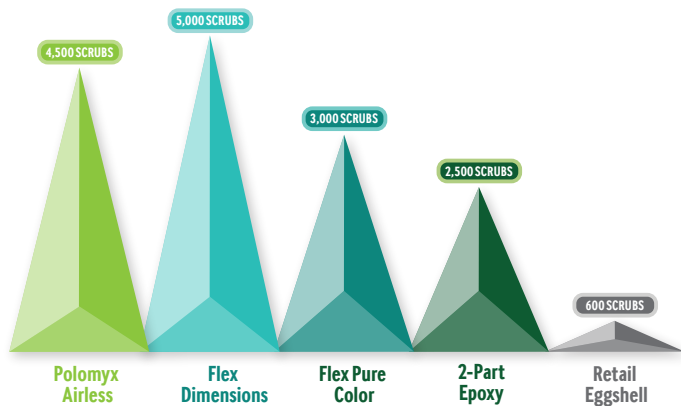
Zolatone: An Economical Advantage Over Latex Paints



1. Project Expenses:



3. Labor Costs:



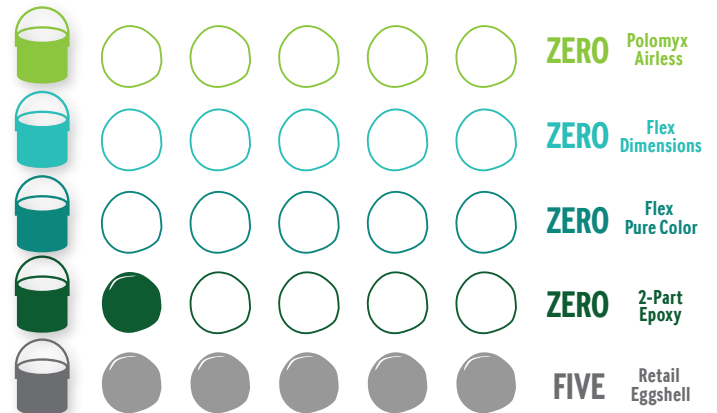
5. Performance Rating:



2. Material Costs:

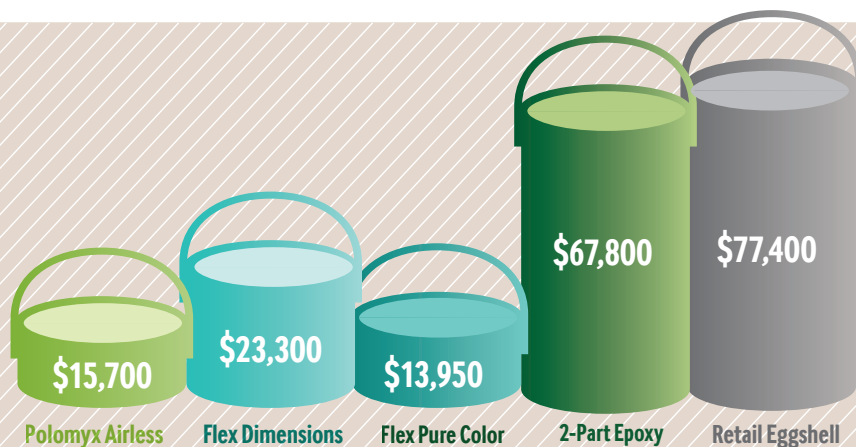


4. Total Expense (10,000 sq ft job):



6. Repaints Over 10 Years:

Total Cost of Ownership over Five Years:



Solutions To Meet New Cleaning & Disinfecting Protocols

The COVID-19 Pandemic created an unprecedented increase in the size, scope, and urgency of professional disinfection. The advanced formulas in Zolatone Interior Coatings create a highly durable paint surface with excellent chemical resistance and class leading scrubability.

- Zolatone can be cleaned and disinfected without burnishing like traditional paints
- Zolatone coatings withstand professional disinfecting with EPA List N disinfectants
- Residential paints can't meet the demands of the new cleaning protocols without burnishing or blistering
- Zolatone offers seamless protection for healthcare spaces and modern looks that do not require frequent repaints or complex repairs

FOR LIGHT STAINS AND SCUFFS

1. Use a sponge, clean water, and a mild, non-abrasive cleaner (dish soap). Using cloth and an abrasive cleaner can burnish the surface.
2. Begin by lightly spraying water on to the stained area of surface.
3. Clean from the bottom upward to prevent streaking.
4. Change the water regularly.
5. When finished, lightly spray the area with clean water to remove any remaining cleaning residue.

FOR HEAVY DISINFECTING

1. Clean surfaces with products like Fiberlock Advanced Peroxide Cleaner or Benefect Atomic Degreaser.
2. Disinfect surfaces after cleaning with Benefect Decon 30 or Fiberlock Shockwave to kill bacteria.

FOR HEAVIER STAINS

1. For tougher stains, apply a natural citrus-based cleaner directly to the stained area. Do not use petroleum based cleaners, as these can damage the surface.
2. Rub the cleaner into the stained area until the stain is dissolved. Work from the clean area into the stained area.

3. Rinse with water to remove any remaining residue.



HELPFUL TIPS

1. Do not use abrasive cleaners.
2. Test an inconspicuous area. Color, application, & ambient conditions can affect the performance of any coating.

Zolatone Coatings Are Compatible With EPA List N Disinfectants

RECOMMENDED DISINFECTANTS FOR USE WITH ZOLATONE

The following disinfectants appear on EPA list N for use against COVID-19. They have been shown to not adversely affect the surface of Zolatone coatings.

- Benefect Decon 30
- Benefect Disinfecting Wipes
- Fiberlock Shockwave RTU
- Peridox RTU
- 5-1 water to bleach dilution

To test compatibility of disinfectants not included on this list, you may request samples of Zolatone products online at [Zolatone.com](https://www.zolatone.com) or by contacting your Zolatone representative.

Our disinfectant compatibility testing was conducted on Zolatone samples that were installed according to manufacturer instructions and allowed to cure for 28 days.

EPA LIST N DISINFECTANTS

To aid the public in selecting disinfectants, the U.S. Environmental Protection Agency (EPA) produced and maintains a list of EPA-registered disinfectant products that have qualified for use against SARS-CoV-2, the novel Coronavirus that causes COVID-19.

According to EPA press releases, products appearing on EPA's list of registered disinfectant products qualified for use against COVID-19 through the agency's Emerging Viral Pathogen program. This program allows product manufacturers to provide the EPA with data, even in advance of an outbreak, that shows their products are effective against harder-to-kill viruses than SARS-CoV-2.

Consumers should follow the directions for use on the product's master label, paying close attention

EPA PRESS RELEASE

"Using the correct disinfectant is an important part of preventing and reducing the spread of illnesses along with other critical aspects such as hand washing. EPA is providing this important information in a public and transparent manner on disinfectant products to help reduce the spread of COVID-19."

**EPA Administrator
Andrew Wheeler, 3/5/20**

to the contact time for the product on the treated surface (i.e., how long the disinfectant should remain on the surface).

- For pharmaceutical compounding areas that use sporicidal cleaners, we recommend installing Flex Pure Color for maximum performance.



USP developed standards for preparing compounded sterile medications to help ensure patient benefit and reduce risks such as contamination, infection or incorrect dosing.

Meeting USP Disinfecting Protocols

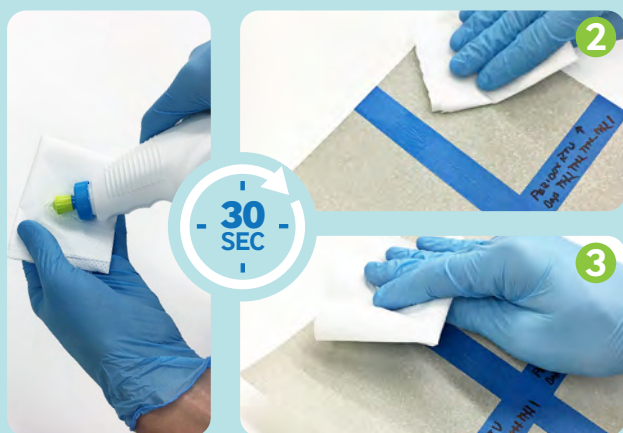
- Testing shows Zolatone withstanding disinfecting mandated by USP
- Zolatone Finishes withstand cleaning associated with USP 797
- Zolatone Finishes withstand cleaning associated with USP 800

Zolatone Finish Testing - Peridox RTU daily one-step application and immediate wipe-off.

Peridox RTU is applied to each sample per instructions. No pre-treat. Peridox RTU is wiped off samples after 20-30 seconds. No rinse used for post-treat.

DAYS: 25+

MATERIALS USED: Peridox RTU and wipes provided by Contec - Manufacturer of Peridox RTU.



RESULTS: All coatings are unchanged. Color retention and adhesion to substrate are unaffected.

Zolatone Finish Testing - Peridox RTU daily one-step application and 5 minute contact time.

Peridox RTU is applied to each sample per instructions. No pre-treat. Peridox RTU is wiped off samples after 5-minute contact time. No rinse used for post-treat.

DAYS: 15+

MATERIALS USED: Peridox RTU and wipes provided by Contec - Manufacturer of Peridox RTU.

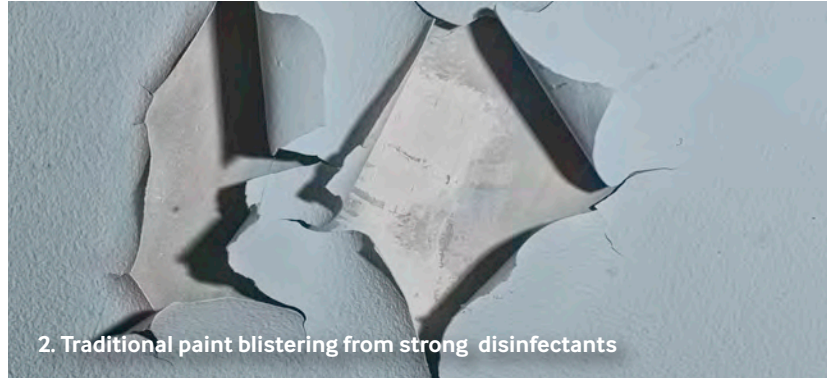


RESULTS: All coatings are unchanged. Color retention and adhesion to substrate are unaffected.

Zolatone Eliminates These Common Paint Issues



1. Damage to traditional paint near sanitizer dispensers



2. Traditional paint blistering from strong disinfectants



3. Burnishing of traditional paint caused by scrubbing



Zolatone coatings provide a great look for healthcare spaces and help avoid common failures seen in traditional paints. Zolatone is an ideal choice for:

- Renovating old tile
- Updating bathroom partitions
- Addressing high traffic areas
- Updating common spaces
- Renovating CMU block walls
- Installing above crash rails
- Using near sanitizer dispensers
- Surfaces in pharmaceutical compounding areas





koroseal[®]
surface-scape your vision[®]

www.koroseal.com
855.753.5474

Visit www.zolatone.com for LEED
compliance, data sheets and SDS info